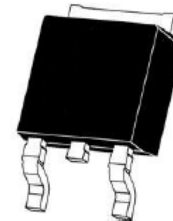


Description

The LMAK20N10 uses advanced trench technology to provide excellent $R_{DS(ON)}$, low gate charge and operation with gate voltages as low as 4.5V. This device is suitable for use as a Battery protection or in other Switching application.

Dimensions TO-252



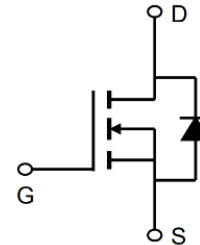
General Features

- $V_{DS} = 100V$ $I_D = 19.3A$
- $R_{DS(ON)} < 85m\Omega$ @ $V_{GS}=10V$ (Type: 65m Ω)

Application

- Lithium battery protection
- Wireless impact
- Mobile phone fast charging

Pin Configuration



Package Marking and Ordering Information

Device	Device Marking	Device Package	Reel Size	Tape width	Quantity
LMAK20N10	AP15N10D	TO-252	-	-	2500 units

Absolute Maximum Ratings (TC=25°C unless otherwise noted)

Symbol	Parameter	Rating	Units
V _{DS}	Drain-Source Voltage	100	V
V _{GS}	Gate-Source Voltage	±20	V
I _D @T _C =25°C	Drain Current, V _{GS} @ 10V	19.3	A
I _D @T _C =100°C	Drain Current, V _{GS} @ 10V	10	A
IDM	Pulsed Drain Current ¹	57.9	A
P _D @T _C =25°C	Total Power Dissipation	30	W
P _D @T _A =25°C	Total Power Dissipation ³	2.7	W
EAS	Single Pulse Avalanche Energy ⁴	7	mJ
TSTG	Storage Temperature Range	-55 to 150	°C
T _J	Operating Junction Temperature Range	-55 to 150	°C
R θ JA	Maximum Thermal Resistance, Junctionambient	55	°C/W
R θ JC	Maximum Thermal Resistance, Junction-case	5.1	°C/W

Electrical Characteristics (T_J=25°C, unless otherwise noted)

Symbol	Parameter	Test Condition	Min.	Typ.	Max.	Units
V(BR)DSS	Drain-Source Breakdown Voltage	VGS=0V, ID=250μA	100	107	-	V
IDSS	Zero Gate Voltage Drain Current	VDS=100V, VGS=0V,	-	-	1.0	μA
IGSS	Gate to Body Leakage Current	VDS=0V, VGS=±20V	-	-	±100	nA
VGS(th)	Gate Threshold Voltage	VDS=VGS, ID=250μA	1.2	1.85	2.5	V
RDS(on)	Static Drain-Source on-Resistance note3	VGS=10V, ID=5A	-	65	85	mΩ
		VGS=4.5V, ID=3A	-	75	100	mΩ
g fs	Forward Transconductance	V DS =5V , I D =5A		14		S
RG	Gate Resistance	VDS = 0V, VGS =0V,f =1MHz		3		Ω
Ciss	Input Capacitance	VDS=15V, VGS=0V, f=1.0MHz	-	1100	-	pF
Coss	Output Capacitance		-	55	-	pF
Crss	Reverse Transfer Capacitance		-	40	-	pF
Qg	Total Gate Charge		-	11.9	-	nC
Qgs	Gate-Source Charge	VDS=50V, ID=5A, VGS=10V	-	2.8	-	nC
Qgd	Gate-Drain("Miller") Charge		-	1.7	-	nC
td(on)	Turn-on Delay Time	VDS=30V, ID=5A, RG=1.8Ω, VGS=10V	-	3.8	-	ns
tr	Turn-on Rise Time		-	25.8	-	ns
td(off)	Turn-off Delay Time		-	16	-	ns
tf	Turn-off Fall Time		-	8.8	-	ns
IS	Continuous Source Current1,5	VG=VD=0V , Force Current	-	-	14.6	A
ISM	Pulsed Source Current2,5		-	-	25	A
VSD	Diode Forward Voltage2	VGS=0V, IS=10A	-	-	1.2	V

Notes:

- 1、 The data tested by surface mounted on a 1 inch 2 FR-4 board with 2OZ copper.
- 2、 The data tested by pulsed , pulse width ≤ 300us , duty cycle ≤ 2%
- 3、 The EAS data shows Max. rating . The test condition is VDD =80V,VGS =10V,L=0.1mH,I AS =7A
- 4、 The power dissipation is limited by 150°C junction temperature
- 5、 The data is theoretically the same as I D and I DM , in real applications , should be limited by total power dissipation

Typical Electrical and Thermal Characteristics

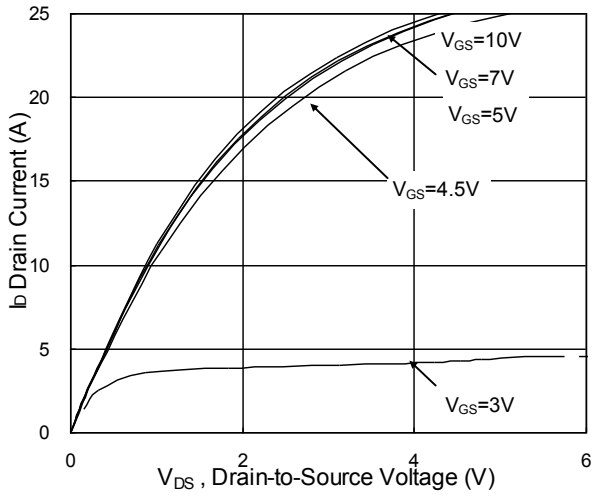


Fig.1 Typical Output Characteristics

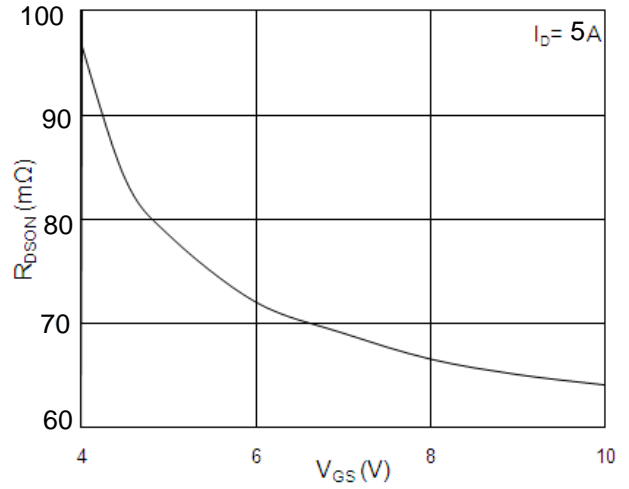


Fig.2 On-Resistance vs. Gate-Source

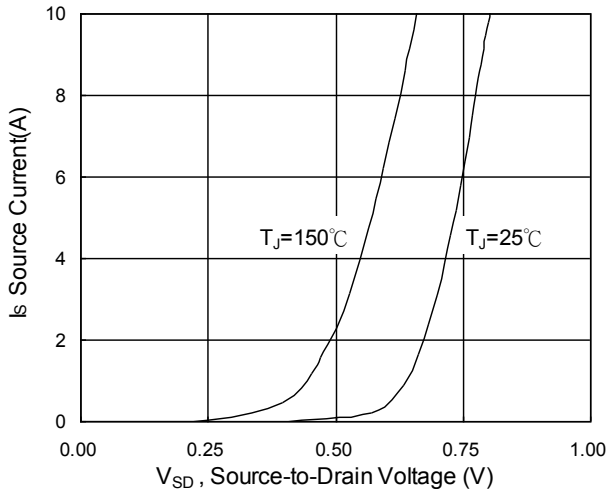


Fig.3 Forward Characteristics Of Reverse

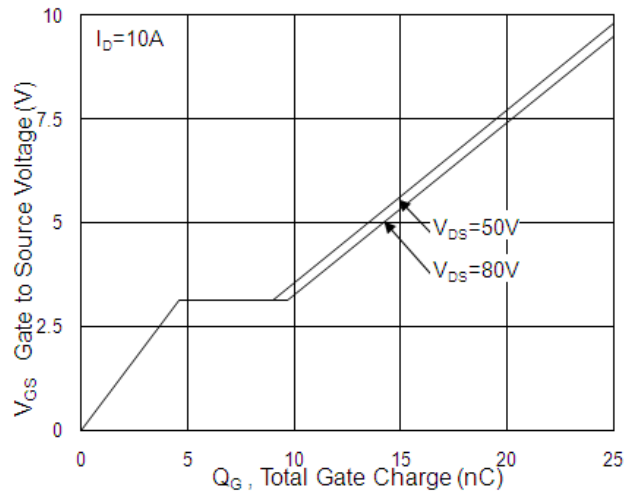


Fig.4 Gate-Charge Characteristics

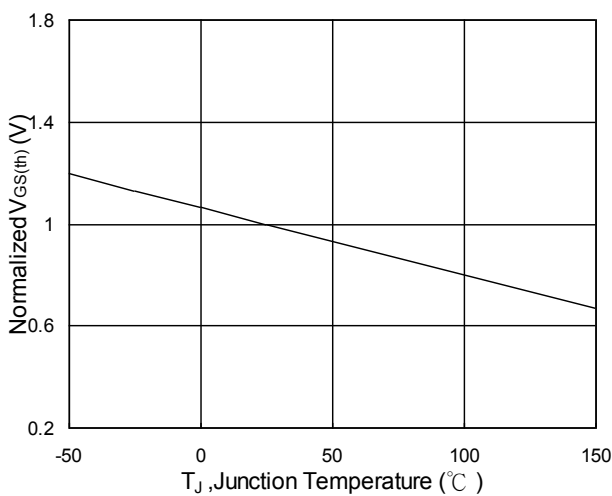


Fig.5 Normalized $V_{GS(th)}$ vs. T_J

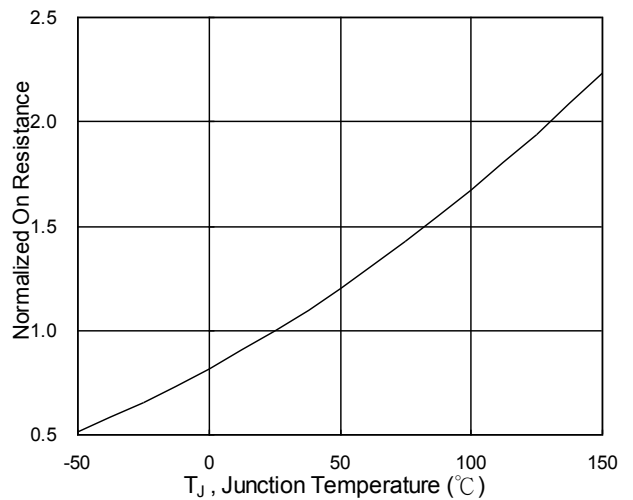


Fig.6 Normalized $R_{DS(on)}$ vs. T_J

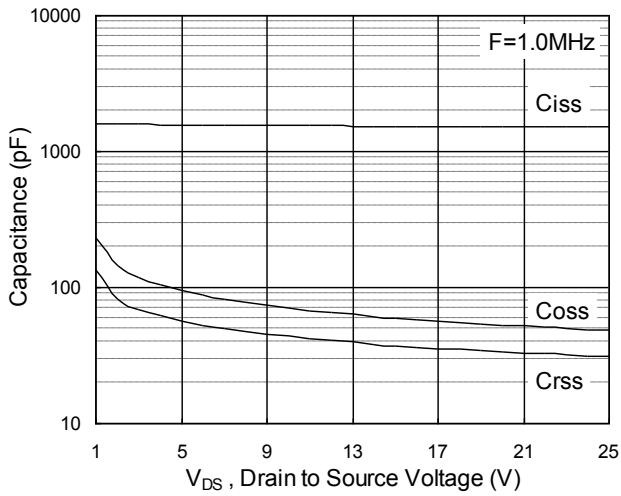


Fig.7 Capacitance

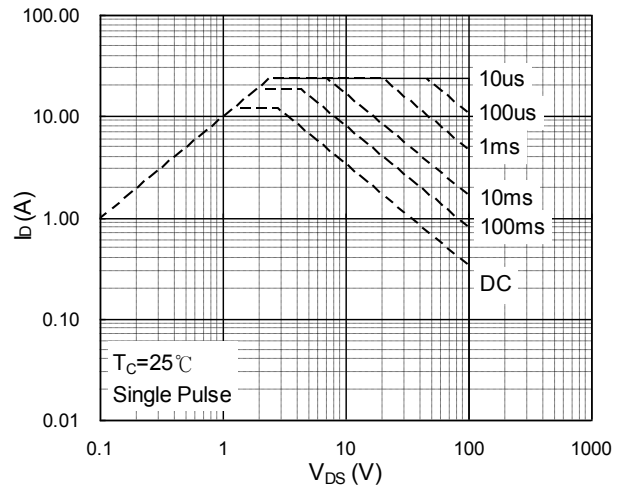


Fig.8 Safe Operating Area

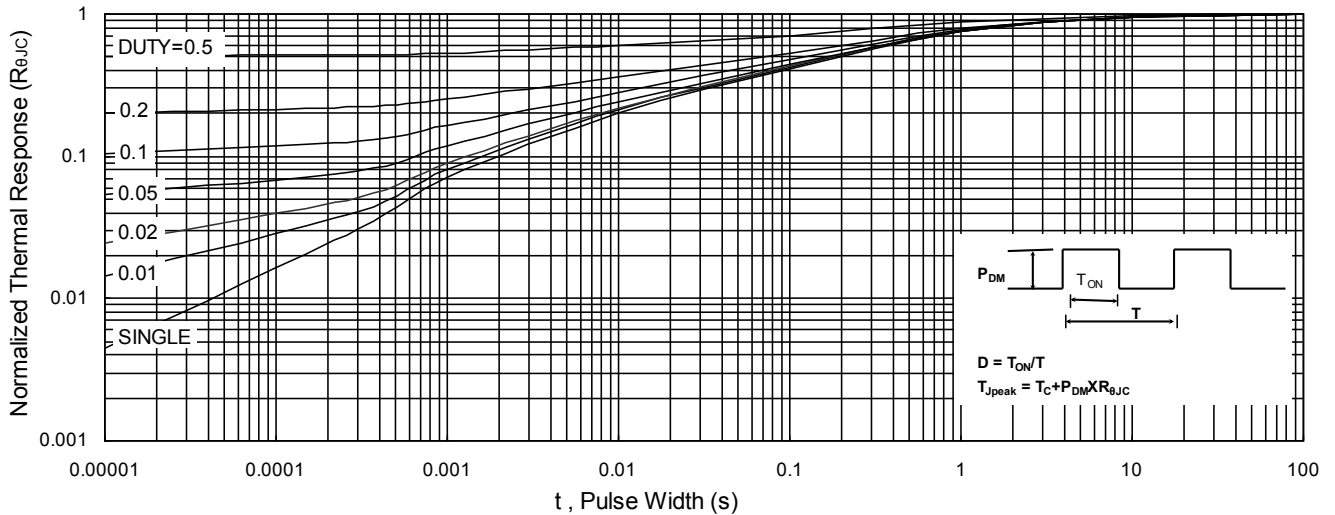
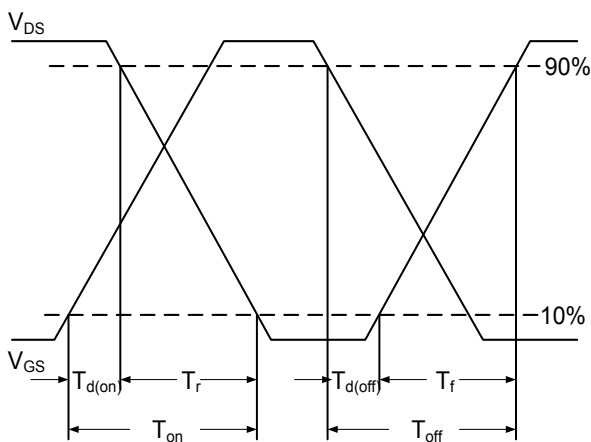
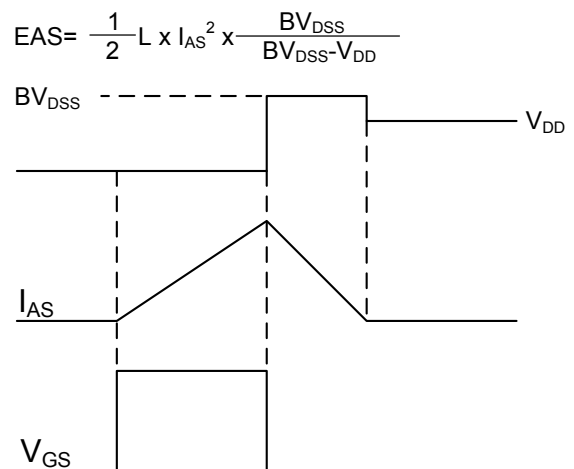


Fig.9 Normalized Maximum Transient Thermal Impedance

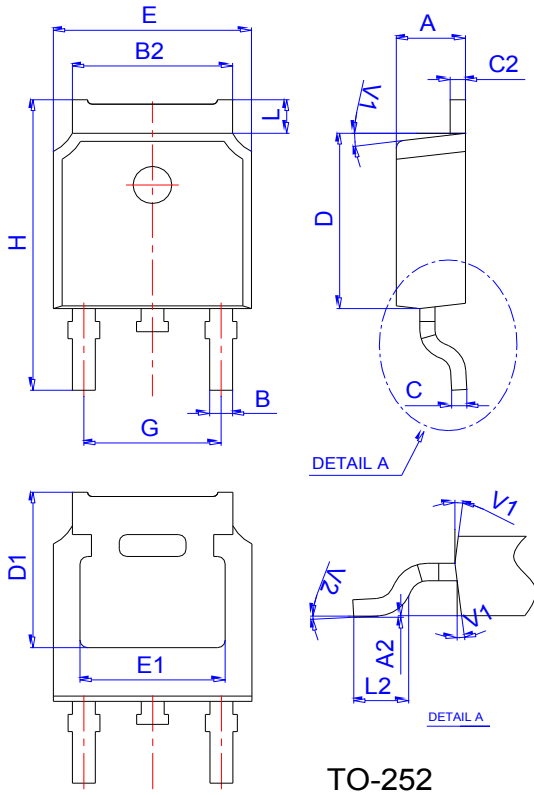


10 Switching Time Waveform



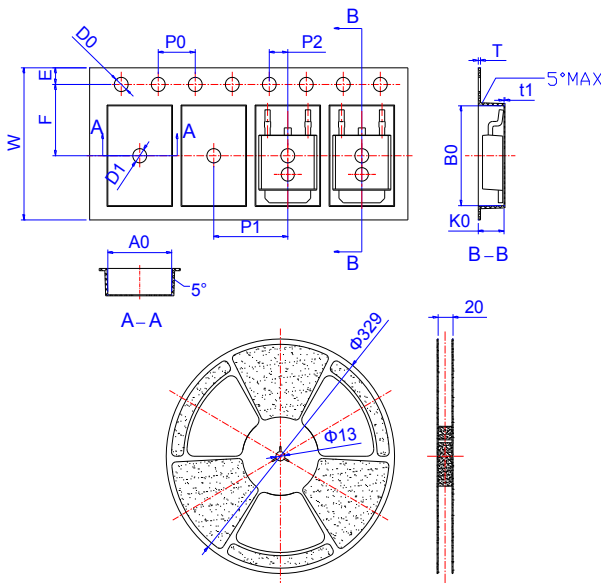
11 Unclamped Inductive Switching Waveform

Package Mechanical Data



Ref.	Dimensions					
	Millimeters			Inches		
	Min.	Typ.	Max.	Min.	Typ.	Max.
A	2.10		2.50	0.083		0.098
A2	0		0.10	0		0.004
B	0.66		0.86	0.026		0.034
B2	5.18		5.48	0.202		0.216
C	0.40		0.60	0.016		0.024
C2	0.44		0.58	0.017		0.023
D	5.90		6.30	0.232		0.248
D1	5.30REF			0.209REF		
E	6.40		6.80	0.252		0.268
E1	4.63			0.182		
G	4.47		4.67	0.176		0.184
H	9.50		10.70	0.374		0.421
L	1.09		1.21	0.043		0.048
L2	1.35		1.65	0.053		0.065
V1		7°			7°	
V2		0°	6°	0°	7°	6°

Reel Specification-TO-252



Ref.	Dimensions					
	Millimeters			Inches		
	Min.	Typ.	Max.	Min.	Typ.	Max.
W	15.90	16.00	16.10	0.626	0.630	0.634
E	1.65	1.75	1.85	0.065	0.069	0.073
F	7.40	7.50	7.60	0.291	0.295	0.299
D0	1.40	1.50	1.60	0.055	0.059	0.063
D1	1.40	1.50	1.60	0.055	0.059	0.063
P0	3.90	4.00	4.10	0.154	0.157	0.161
P1	7.90	8.00	8.10	0.311	0.315	0.319
P2	1.90	2.00	2.10	0.075	0.079	0.083
A0	6.85	6.90	7.00	0.270	0.271	0.276
B0	10.45	10.50	10.60	0.411	0.413	0.417
K0	2.68	2.78	2.88	0.105	0.109	0.113
T	0.24		0.27	0.009		0.011
t1	0.10			0.004		
10P0	39.80	40.00	40.20	1.567	1.575	1.583

Shanghai Leiditech Electronic Co.,Ltd
 Email: sale1@leiditech.com
 Tel : +86- 021 50828806
 Fax : +86- 021 50477059